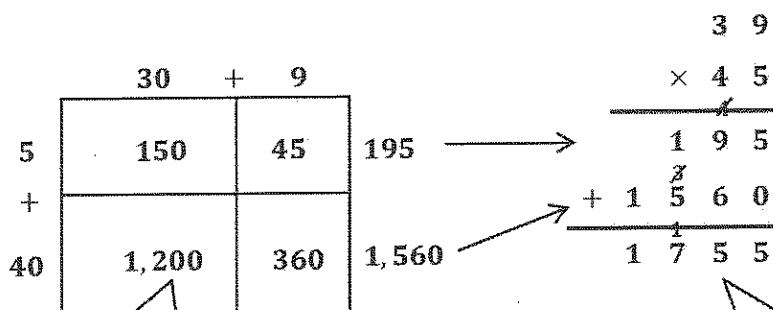


G5-M2-Lesson 6

1. Draw an area model. Then, solve using the standard algorithm. Use arrows to match the partial products from your area model to the partial products in the algorithm.

a. 39×45

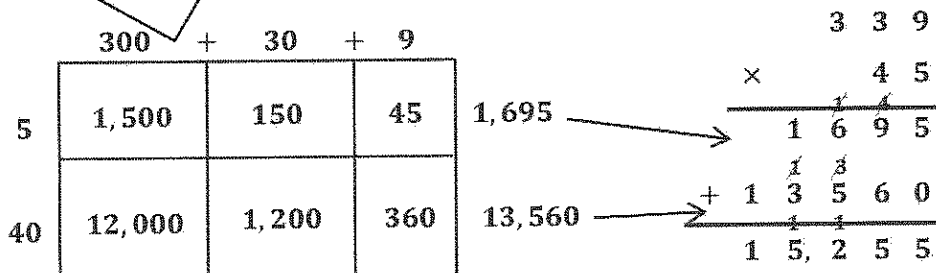


I can use unit form to find these partial products. For example, 3 tens \times 4 tens is 12 hundreds or 1,200.

There are 2 partial products in the standard algorithm because I multiplied by 45, a 2-digit factor.

b. 339×45

The area model shows the factors expanded. If I wanted to, I could put the + between the units.



2. Desmond bought a car and paid monthly installments. Each installment was \$452 per month. After 36 months, Desmond still owes \$1,567. What was the total price of the car?

I'll find out how much Desmond would pay in 36 months.

$$\begin{array}{r}
 452 \\
 \times 36 \\
 \hline
 2712 \\
 + 13560 \\
 \hline
 16272
 \end{array}$$

$$\begin{array}{r}
 16,272 \\
 + 1,567 \\
 \hline
 17,839
 \end{array}$$

I'll add what he paid after 36 months to what Desmond still owes.

The total price of the car was \$17,839.

I remembered to write a sentence that answers the question.