

G4-M5-Lesson 33

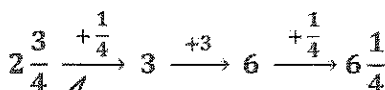
1. Write a related addition sentence. Subtract by counting on. Use a number line or the arrow way to help.

$$6\frac{1}{4} - 2\frac{3}{4} = 3\frac{2}{4}$$

I add the numbers on top of the arrows to find the unknown addend.

$$\frac{1}{4} + 3 + \frac{1}{4} = 3\frac{2}{4}$$

$$2\frac{3}{4} + 3\frac{2}{4} = 6\frac{1}{4}$$



I add 3 to get to 6.

I use the arrow way to count up to solve for the unknown in my addition sentence. I add $\frac{1}{4}$ to get to the next one, 3.

My final number needs to be $6\frac{1}{4}$ so I need to add 1 more fourth.

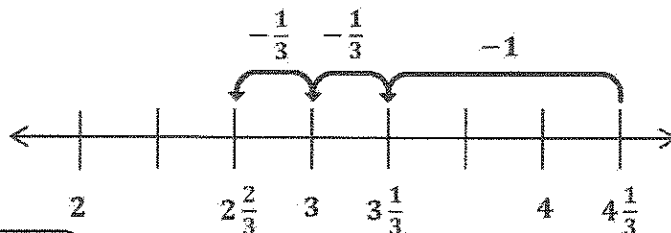
2. Subtract by decomposing the fractional part of the number you are subtracting. Use a number line or the arrow way to help you.

$$4\frac{1}{3} - 1\frac{2}{3} = 3\frac{1}{3} - \frac{2}{3} = 2\frac{2}{3}$$

$$\frac{1}{3} \quad \frac{1}{3}$$

I subtract 1 from $4\frac{1}{3}$.

$$3\frac{1}{3} - \frac{1}{3} = 3 \text{ and } 3 - \frac{1}{3} = 2\frac{2}{3}$$



3. Subtract by decomposing to take one out.

$$7\frac{2}{10} - 5\frac{9}{10}$$

$$7\frac{2}{10} - 5\frac{9}{10} = 2\frac{2}{10} - \frac{9}{10} = 1\frac{2}{10} + \frac{1}{10} = 1\frac{3}{10}$$

$$1\frac{2}{10} \quad 1$$

I decompose $2\frac{2}{10}$
to take 1 out.

I subtract $1 - \frac{9}{10}$.

I add the other part of the number bond,
 $1\frac{2}{10}$, to the difference of $1 - \frac{9}{10}$.